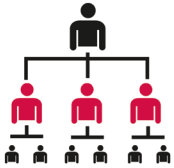


The Washington SBDC is a robust network of more than two dozen business advisors who work in communities across the state to help small businesses grow and succeed.

Below are the economic impact results for the Washington SBDC Network since 2010 (10 years).



7,535
Jobs Created



5,730
Jobs Saved



1,341
Businesses Started



16,602
Clients Counseled



\$577,352,926
Total New Capital



**Bliss Kiss
Cory and Ana Seidel, Owners
Olympia, WA**

“With the help of the SBDC, we have been able to build something that makes us proud.”

- Ana Seidel